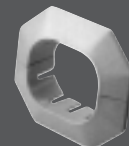
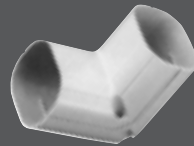
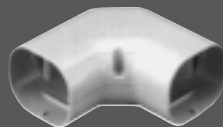
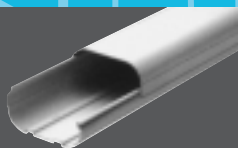
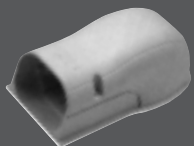
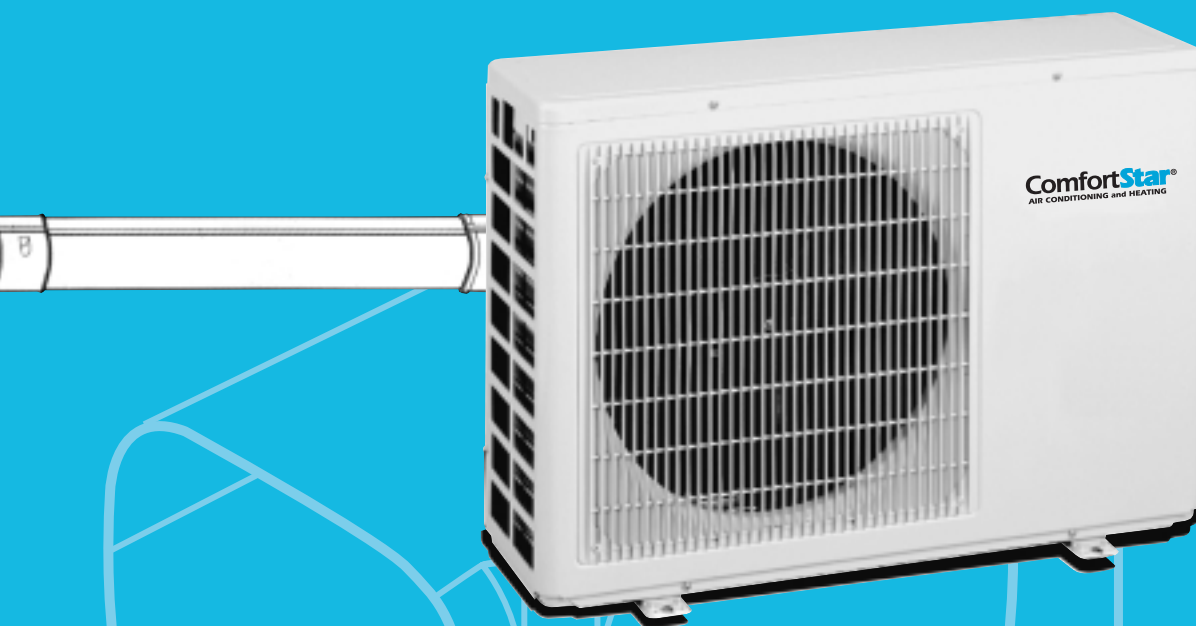


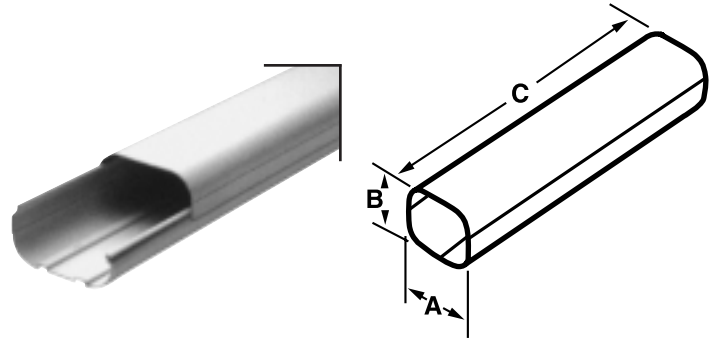
# Smart Duct™

## Line Set Cover and Plastic Fittings for Mini-Splits



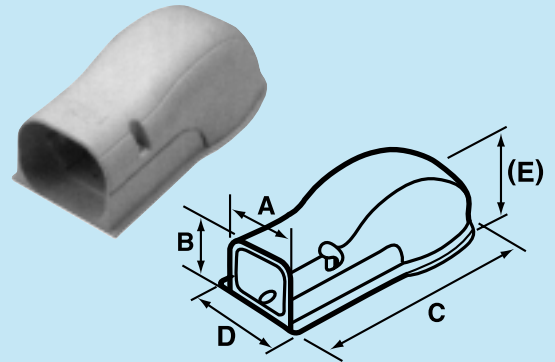
### Split Line Tube

Product No.	Dimensions (in inches)			Weight (ounces)
	A	B	C	
SDD60	2 1/4	2 5/16	78 3/4	38.8
SDD75	2 15/16	2 7/16	78 3/4	44.1
SDD100	3 7/8	2 11/16	78 3/4	64.2



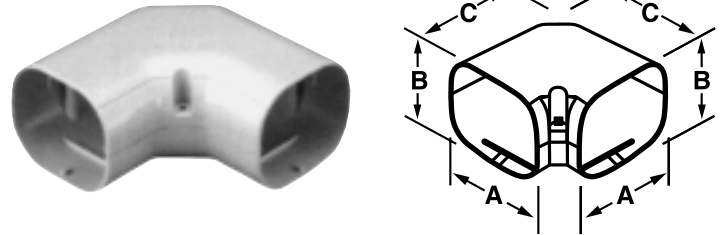
### Wall Cover/Inlet

Product No.	Dimensions (in inches)					Weight (ounces)
	A	B	C	D	E	
SWW60	2 9/16	2 9/16	7 7/8	3 1/16	3 3/16	6.3
SWW75	3 1/4	2 11/16	8 1/4	3 11/16	3 1/4	7.9
SWW100	4 3/16	2 15/16	9 1/8	4 11/16	3 3/4	10.6



### 90° Elbow (Horizontal)

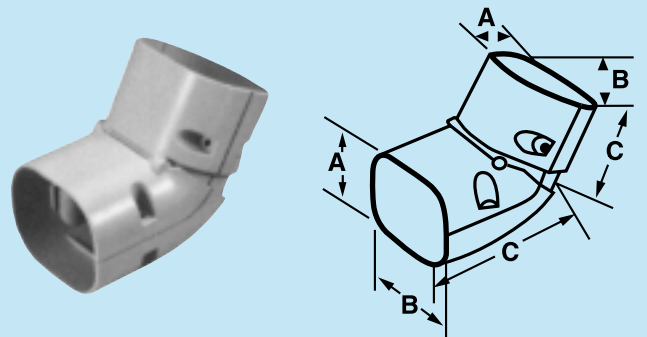
Product No.	Dimensions (in inches)			Weight (ounces)
	A	B	C	
SEC60	2 9/16	2 9/16	4 11/16	4.8
SEC75	3 1/4	2 11/16	5 9/16	6.3
SEC100	4 3/16	2 15/16	6 5/16	8.5



### Universal Elbow (Vertical)

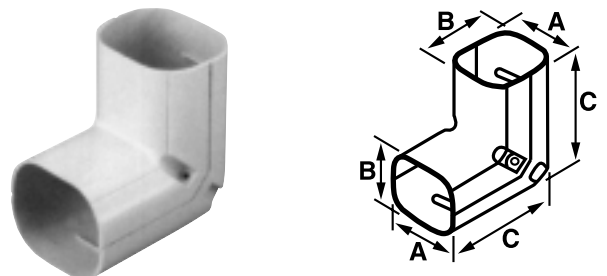
adjustable 45 to 90 Deg.

Product No.	Dimensions (in inches)			Weight (ounces)
	A	B	C	
SDC60	2 9/16	2 9/16	4 5/8	5.3
SDC75	3 3/8	2 11/16	4 13/16	6.0



### 90° Elbow (Vertical)

Product No.	Dimensions (in inches)			Weight (ounces)
	A	B	C	
SEE60	2 9/16	2 9/16	4 3/4	5.3
SEE75	3 1/4	2 11/16	4 7/8	6.0
SEE100	4 3/16	2 15/16	5 5/16	8.5



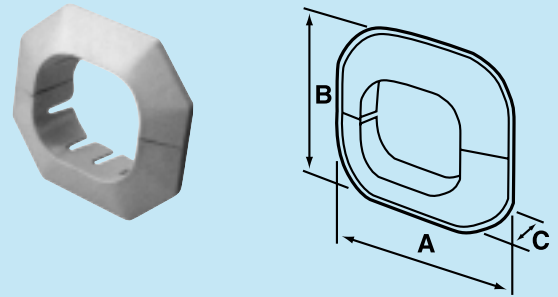
> Fire resistant ABS  
equivalent UL-94V-0

> Natural sand color

[www.comfortstarusa.com](http://www.comfortstarusa.com)

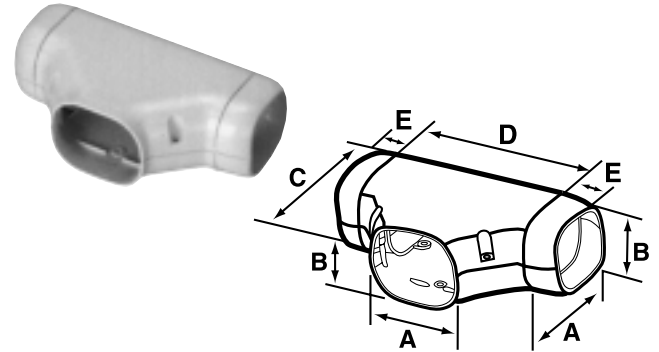
## Wall Entry Fitting

Product No.	Dimensions (in inches)			Weight (ounces)
	A	B	C	
SWI60	4 5/16	4 5/16	5/8	2.4
SW75	4 15/16	4 1/2	5/8	2.7
SW100	6 7/8	5 11/16	5/8	4.5



## T-Joint

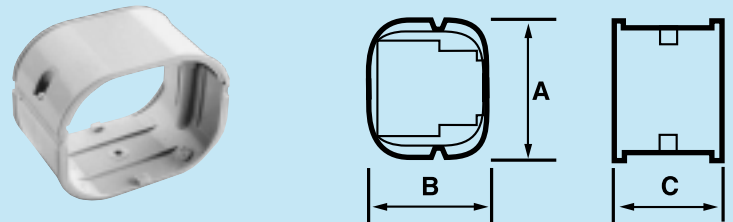
Product No.	Dimensions (in inches)					Weight (ounces)
	A	B	C	D	E	
STT75	3 1/4	2 11/16	4 3/4	6 5/16	1	8.0
STT100	4 3/16	2 15/16	6 5/16	8 7/16	1 3/8	10.6



STT75 supplied with 2 Reducing Adaptors (75>60)  
STT100 supplied with 4 Reducing Adaptors: 2 - (100>60) and 2 - (100>75)

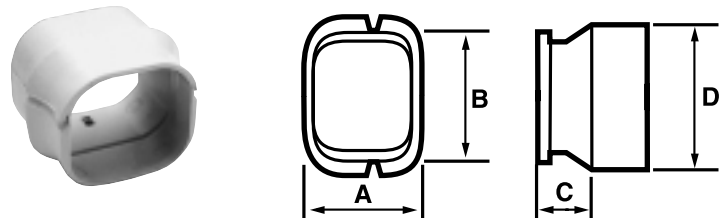
## Joint

Product No.	Dimensions (in inches)		
	A	B	C
SJ60	2.795	2.480	2.00
SJ75	3.307	2.637	1.968
SJ100	4.251	2.952	2.598



## Reducer Joint

Product No.	Dimensions (in inches)			
	A	B	C	D
SRJ75	2.48032	2.795	1.220	3.268
SRJ100	2.717	3.465	1.339	4.173

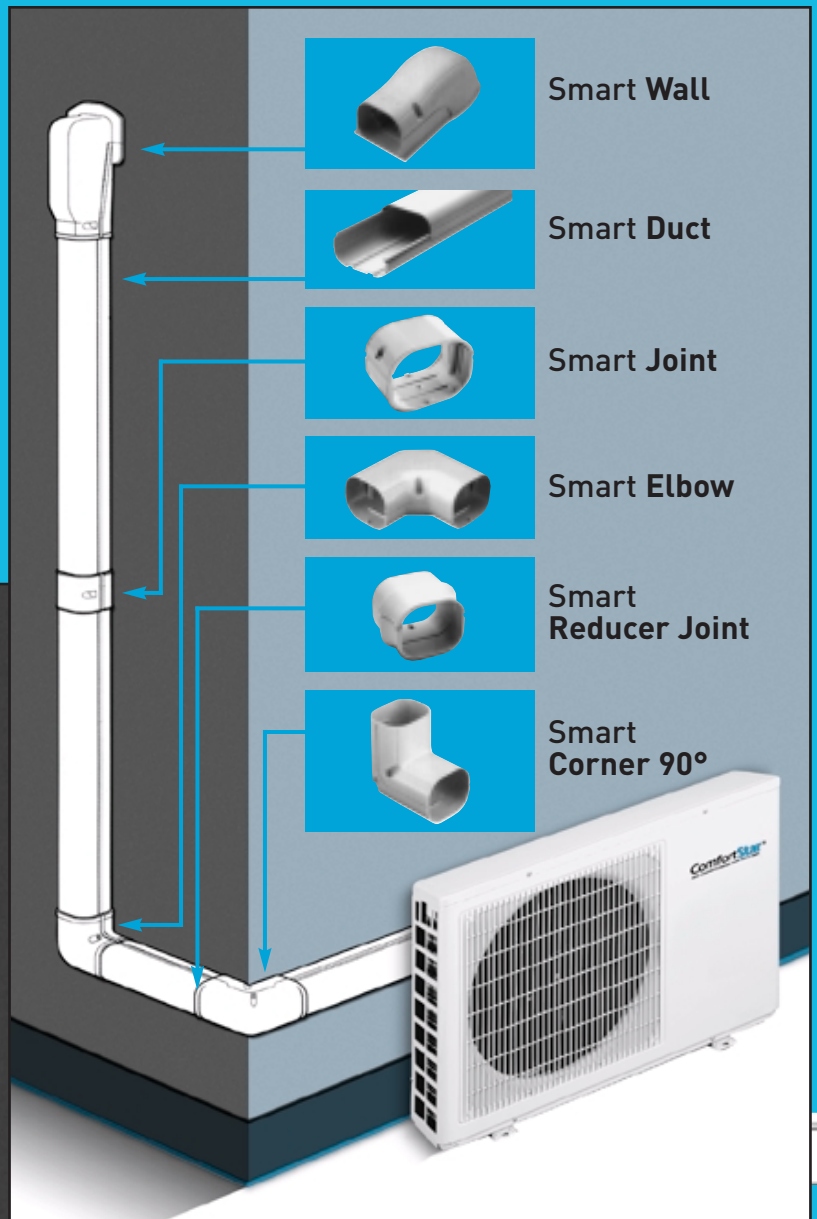


## Stainless Steel Wall Bracket for Mini-Split



# Smart Duct™

for Air-Conditioners



**ComfortStar®**  
AIR CONDITIONING and HEATING

12201 N.W. 107th Ave., Medley, Florida 33178  
Toll Free 1-866-591-9898 - Fax 305-500-9896

[www.comfortstarusa.com](http://www.comfortstarusa.com)